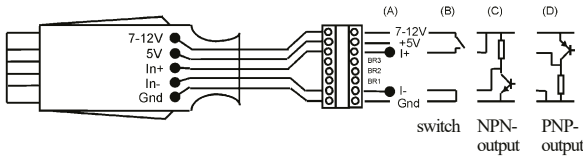
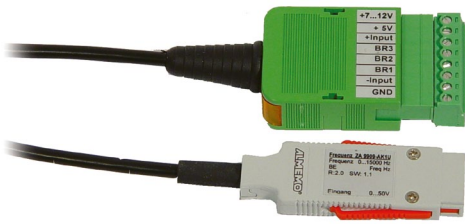


Input connectors and adapter cables

ALMEMO® Adapter Cable for Frequency / Pulse / Rotational Speed

for sensors, Supply : 5 V or direct from ALMEMO® device



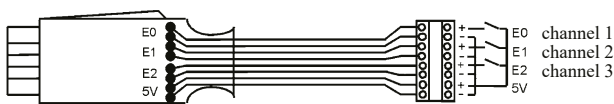
Technical Data

Frequency range:	0 to 15000 Hz (Resolution 1 Hz) 0 to 3200.0 Hz (Resolution 0.1 Hz)
Speed range:	8 to 32000 rpm (Resolution: 1 rpm)
Max. pulse count:	65000
Pulse length:	> 50 ms
Input voltage	6 to 40 V, square-wave via optocoupler
Current consumption:	3 mA
Sensor supply	direct from ALMEMO® device (for voltage see technical data of ALMEMO® device)
Option V12	
Sensor supply:	12,2 to 12,5 V
Output current:	100mA at $U_G = 9$ to 12 V (U_G = device sensor voltage)

Types: (Cable lengths, 1.5 meters)

Model	Meas. Range	Resolution	Order no.
Frequency	0 to 15000 Hz	1 Hz	
Frequency	0 to 3200,0 Hz	0.1 Hz (can, by inserting wire jumper, be switched to)	ZA9909AK1U
Pulses / Cycle	0 to 65000 Imp	1 Imp	ZA9909AK2U
Speed	8 to 32000 UpM	1 UpM	ZA9909AK4U
Option sensor supply	12 V		OA9909V12

ALMEMO® Adapter Cable for Digital Input Signals

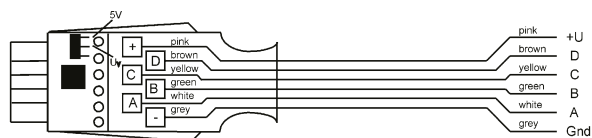


Types: (cable length, 1.5m each)

Order no.
ZA9000ES2
ZA9000EK2

Input connectors and adapter cables

ALMEMO® Universal Adapter Cable with Free Ends



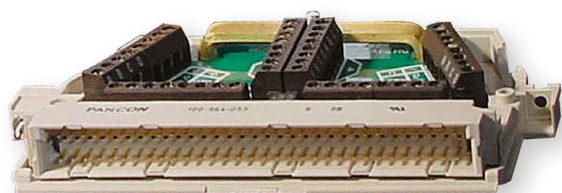
Types:

The ALMEMO® universal connector ZA 9000-FS is also available with connecting cable and free ends, as adapter cable ZA9000AK. The sensor supply voltage is present on terminal U+; it is supplied by the ALMEMO® device (sensor supply voltage 5 V, can be stabilized on request). Connecting cable : 8-wire, 8 x 0.14 mm², black, Length 1.5 m The wiring diagram and color code of the wires are consistent for all ALMEMO® sensors and cables, so that any pin configuration can be quickly and easily identified.

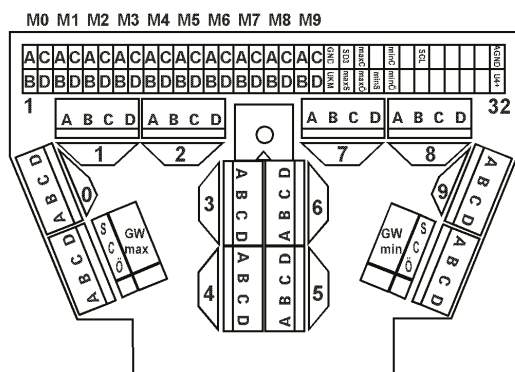
Order no.

ZA9000AK

ALMEMO® 10-Fold MU Connector for ALMEMO® Plug-In Boards with 64-Pin Spring Contact Strip



! NOT suitable for sensors needing interface circuitry (e.g. 26 V, AC voltage, mA, humidity sensors, rotating vanes, frequency, pulse, rotational speed) no sensor supply possible)



! The current MU connector version, ZA5690MU, can only be used in conjunction with the new ALMEMO® 5690 systems. The old MU connector version, ZA5590MU, can of course be used in conjunction with the old ALMEMO® 5590/5990 systems but is subject to certain restrictions with the current 5690 systems (e.g. only 1 measuring channel per input, no multi-point adjustment or connector linearization)

Types:

ALMEMO® 10-fold connector (64-pin) with EEPROM sensor memory for connecting 10 sensors; on request pre-programmed to your specifications for Data acquisition systems ALMEMO® 5690 and 500 (not for ALMEMO® 5590 / 5990)
For Data acquisition systems ALMEMO® 5590 und 5990

Order no.

ZA5690MU
ZA5590MU

Input connectors and adapter cables

ALMEMO® Connector Adapter Cable, Digital Input of Third Party Device to ALMEMO® Device Type ZA 1000A KSW / ZAD 919A Kxx



Existing equipment incorporating a digital interface can, thanks to our flexible ALMEMO® system, continue being used. For this purpose, we can offer you the following service : 1. We program a device type protocol for you, which matches the output interface of your device. 2. We fit the interface cable for your device with the matching ALMEMO® connector.

Description:

- Data acquisition from external devices with digital interface (RS232, Modbus RTU) and integration in the data acquisition with ALMEMO® devices.
- The digital connector of the adapter cable provides an electrically isolated serial interface and includes an interface processor for protocol conversion.
- Value-adding to existing measuring technology at a very interesting price-performance ratio.

Examples:

- Scales and weighing equipment
- Dial gauges and displacement transducers
- Multimeters
- Incremental displacement transducers
- Flue gas analysers

Types:

For the purposes of programming the interface, please provide us with a detailed description of the output interface of the third-party device you want to have integrated, or a matching cable, or a connector including the pin configuration, plus the third-party device itself for the purposes of testing and checking.

Interface programming for the device type protocol of the device to be integrated
ALMEMO® connector adapter cable

Order no.

ZA1000AKSW
ZAD919AK