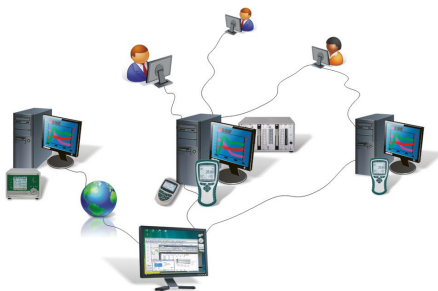


RMT WinControl software for evaluating, monitoring, networking



Program description

- Access to measured values on one or more AMR WinControl data servers in a local network or via the Internet
- Access to one measuring system by any number of users simultaneously
- Open and evaluate AMR files
- Same range of functions as AMR WinControl except for device access
- At our site (www.akrobit.de) you can find all the latest information regarding software versions and updates and also download the most recent trial version of the software.



RMT WinControl can perform the following:

- Monitoring of measured data from WinControl data servers at various locations
- Evaluation of acquired measured data / files independent of the recording computer
- Safe and secure access to the data acquisition system by “read-only” protocol
- Additional alarm handling and recording independent of the recording computer
- By accessing automatically stored files of an AMR WinControl and querying the measured value history, the evaluation computer does not have to run continuously.

Software versions

- Basic version (like SW5600WC2 except for device access and maximum 1 connection)
- Professional version (like SW5600WC3 except for device access and maximum 1 connection)
- Web server (like SW5600WC4 except for device access and any number of connections)
- Update to the latest software version

Order no.

- SW5600WCR2
- SW5600WCR3
- SW5600WCR4
- SW5600WCRU

Options

- Automatic generation of measured data files (daily files / weekly files)
- Modem support
- Alarm function (event list, alarm e-mail / SMS, switching of ALMEMO® output relays)
- Data server see page 144
- Web server see page 145
- Extended evaluation functions see page 140, extended evaluation

Order no.

- SW5600WCRO2
- SW5600WCRO3
- SW5600WCRO5
- SW5600WCRO8
- SW5600WCRO9
- SW5600WCRO10

Additional modules

- Thermal comfort calculations as per DIN 1946, EN ISO 7730 see page 141
- Password protection see page 142
- Test bench manager (prerequisite: WCR3 / WCR4 or WCR2 + WCRO2) see page 143
- Thermal transmittance (U) wizard see page 141
- Thermal quantity wizard see page 142
- OPC export see page 143

- SW5600WCRZM1
- SW5600WCRZM2
- SW5600WCRZM3
- SW5600WCRZM4
- SW5600WCRZM5
- SW5600WCRZM6

Hardware copy protection see page 147

- Hardlock USB dongle

SW5600HL

Minimum system requirements

Component	Minimum configuration	Recommended configuration
Computer	Windows-PC (x86/x64)	Windows-PC (x86/x64)
Operating system	Windows 8.1, 10, 11, server 2016, 2019, 2022 (32 and 64 bit)	Windows 11
RAM	8192 MB	16384 MB
Free hard-disk capacity	25 MB	100 MB
Interfaces	Network card TCP/IP	Network card TCP/IP, Internet or VPN